



C U T S H E E T

Integrated Disconnect Combiners

Bentek Solar Combiners with integrated UL 600VDC or 1000VDC load-break disconnects. Reduce costs by eliminating installation time and wiring. Flexible design for customization and ease of installation. Enhanced level of user safety.

Product Features

- ▶ NEMA 3R/4, or 4X.
- ▶ Steel, fiberglass, or stainless enclosures.
- ▶ 600VDC or 1000VDC intergrated disconnect.
- ▶ Installed Vertically or Horizontally.
- ▶ 55A, 100A, 200A, and 400A disconnects.
- ▶ Rated for Continuous Duty.
- ▶ 3 to 36 input circuits.
- ▶ 90°C output terminals, $\geq 200A$.
- ▶ Touch-Safe fuse holders.
- ▶ Max fuse size = 30A.
- ▶ Fuses supplied to specifications.
- ▶ Protective covers on all live parts.
- ▶ Configured for either positive or negative ground.
- ▶ Ask about the many options
- ▶ UL1741 listed, CSA 22.2 certified
- ▶ CE marked at 1000 Volts

Configurations

Bentek Solar Disconnect Combiners offer a comprehensive selection of input, output, and ampacity configurations to suit your needs.

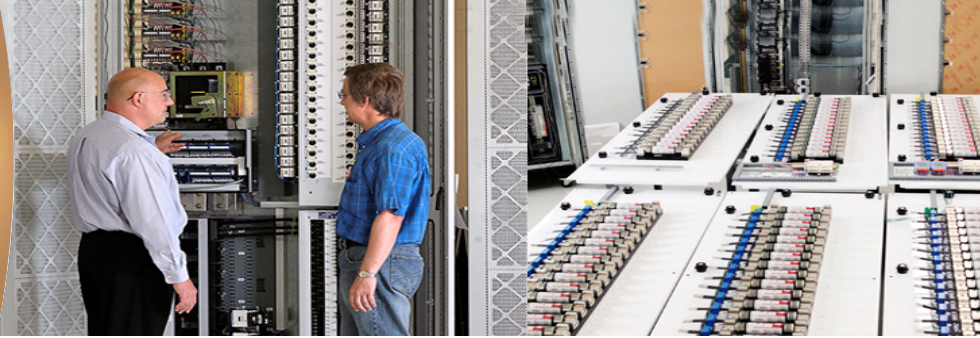
We'd be glad to assist you in specifying a combiner for your application.



ISO 9001:2008 Quality Certified

Contact Us Today • 1-866-505-0303

SOLAR COMBINERS



High Quality, Ease of Installation and Safety

Bentek's line of Disconnect Combiner boxes are designed to meet your specific needs for each specific job.

With the flexibility of adding monitoring capabilities and/or integrated disconnects into the combiner. Bentek is sure to have the right combiner to meet your exacting needs.

There is ample internal space for ease of installation and plenty of wire bending space per NEC requirements.

Our flexibility leads the industry in manufacturing configure-to-order combiners. Contact us now for your next upcoming project.

Ratings from 28A to 400A for both 600VDC and 1000VDC.

Bentek Solar Model Combiners	Max Voltage	Input Circuits	Max Fuse size (A)	Input Conductor (AWG)	Integrated Disconnect Ampacity	Output Conductor (AWG)	Enclosure Size (HxWxD)	Enclosure Options
BTK6-06yy-D55	600	up to 6	30	#14 to #8	55A	#10 to 1/0	14"x12"x6"	4x Fiberglass, NEMA 3R/4 Steel, Stainless
BTK6-16yy-D100	600	up to 16	30	#14 to #8	100A	#6 to 350MCM	20"x16"x9"	4x Fiberglass, NEMA 3R/4 Steel, Stainless
BTK6-24yy-D200	600	up to 24	30	#14 to #8	200A	#6 to 350MCM	24"x20"x9"	4x Fiberglass, NEMA 3R/4 Steel, Stainless
BTK6-36yy-D400	600	up to 36	30	#14 to #8	400A	600MCM or 2x250MCM	30"x24"x10"	4x Fiberglass, NEMA 3R/4 Steel, Stainless
BTK10-06yy-D55	1000	up to 6	30	#14 to #8	55A	#10 to 1/0	14"x12"x6"	4x Fiberglass, NEMA 3R/4 Steel, Stainless
BTK10-16yy-D100	1000	up to 16	30	#14 to #8	100A	#6 to 350MCM	20"x16"x9"	4x Fiberglass, NEMA 3R/4 Steel, Stainless
BTK10-24yy-D200	1000	up to 24	30	#14 to #8	200A	#6 to 350MCM	24"x20"x9"	4x Fiberglass, NEMA 3R/4 Steel, Stainless
BTK10-36yy-D400	1000	up to 36	30	#14 to #8	400A	600MCM or 2x250MCM	30"x24"x10"	4x Fiberglass, NEMA 3R/4 Steel, Stainless

yy = Fuse Size



About Bentek Solar

Founded in 1985, Bentek is a leader in manufacturing and engineering solutions for complex electro-mechanical and power distribution systems for the semiconductor and solar industries. Bentek has applied these extensive capabilities and knowledge into a comprehensive family of standard and configure-to-order (CTO) solar combiner products. These solar combiners provide quality, ease of installation and safety to the solar industry. For more information contact Bentek Solar at 866-505-0303, or on the Web at JohnB@bentek.com or www.BentekSolar.com.

SOLAR COMBINERS