

C U T   S H E E T



MADE IN USA

## Configurations

Bentek Solar Smart Disconnect Combiners offer a comprehensive selection of input, output, and ampacity configurations to suit your needs.

We'd be glad to assist you in specifying a combiner for your application.



## Smart Disconnect Combiners

Integrated with UL 600VDC or 1000VDC load-break disconnects and current sense capability. Maximum performance and safety for your investment. Flexible design for customization and ease of installation.

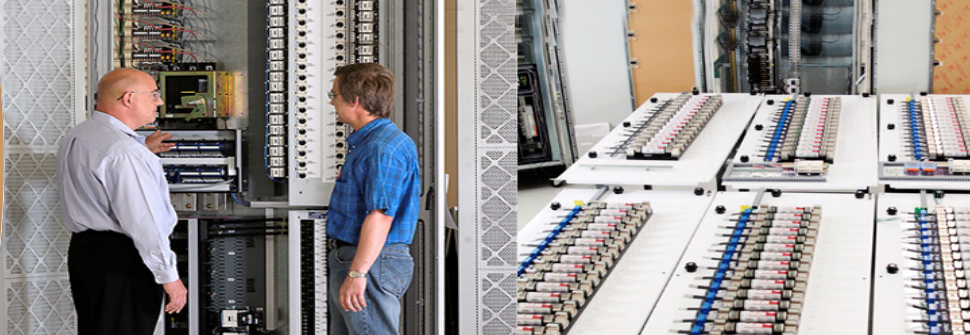
### Product Features

- ▶ NEMA 3R/4, or 4X.
- ▶ Steel, fiberglass, or stainless enclosures.
- ▶ Installed Vertically or Horizontally.
- ▶ Industry leading FULL PV monitoring.
- ▶ RS-485 data communication.
- ▶ 55A, 100A, 200A, and 400A disconnects.
- ▶ Rated for Continuous Duty.
- ▶ 4 to 30 input circuits.
- ▶ 90°C output terminals,  $\geq 200A$ .
- ▶ Touch-Safe fuse holders.
- ▶ Fuses supplied to specifications.
- ▶ Protective covers on all live parts.
- ▶ Configured for either positive or negative ground.
- ▶ Ask about the many options.
- ▶ UL1741 listed, CSA 22.2 certified.
- ▶ CE marked at 1000 Volts.

**ISO 9001:2008 Quality Certified**

Contact Us Today • **1-866-505-0303**

# SOLAR COMBINERS



## High Quality, Ease of Installation and Safety

Bentek's line of string combiner boxes are designed to meet your specific needs for each specific job.

With the flexibility of adding monitoring capabilities and/or integrated disconnects into the combiner. Bentek is sure to have the right combiner to meet your exacting needs.

There is ample internal space for ease of installation and plenty of wire bending space per NEC requirements.

Our flexibility leads the industry in manufacturing configure-to-order combiners. Contact us now for your next upcoming project.

Ratings from 28A to 400A for both 600VDC and 1000VDC.

Bentek Solar Model Combiners	Max Voltage	Input Circuits	Max Fuse size (A)	Input Conductor (AWG)	Integrated Disconnect Ampacity	Output Conductor (AWG)	Enclosure Size (HxWxD)	Enclosure Options
BTK6-06yy-D55-S	600	up to 11	13	#14 to #8	55A	#10 to 1/0	14"x12"x6"	4x Fiberglass, NEMA 3R/4 Steel, Stainless
BTK6-15yy-D100-S	600	up to 15	16	#14 to #8	100A	#6 to 350MCM	20"x16"x9"	4x Fiberglass, NEMA 3R/4 Steel, Stainless
BTK6-24yy-D200-S	600	up to 24	16	#14 to #8	200A	#6 to 350MCM	24"x20"x9"	4x Fiberglass, NEMA 3R/4 Steel, Stainless
BTK6-30yy-D400-S	600	up to 30	16	#14 to #8	400A	600MCM or 2x250MCM	30"x24"x10"	4x Fiberglass, NEMA 3R/4 Steel, Stainless
BTK10-06yy-D55-S	1000	up to 6	13	#14 to #8	55A	#10 to 1/0	14"x12"x6"	4x Fiberglass, NEMA 3R/4 Steel, Stainless
BTK10-15yy-D100-S	1000	up to 15	16	#14 to #8	100A	#6 to 350MCM	20"x16"x9"	4x Fiberglass, NEMA 3R/4 Steel, Stainless
BTK10-24yy-D200-S	1000	up to 24	16	#14 to #8	200A	#6 to 350MCM	24"x20"x9"	4x Fiberglass, NEMA 3R/4 Steel, Stainless
BTK10-30yy-D400-S	1000	up to 30	16	#14 to #8	400A	600MCM or 2x250MCM	30"x24"x10"	4x Fiberglass, NEMA 3R/4 Steel, Stainless

yy = Fuse Size



## About Bentek Solar

Founded in 1985, Bentek is a leader in manufacturing and engineering solutions for complex electro-mechanical and power distribution systems for the semiconductor and solar industries. Bentek has applied these extensive capabilities and knowledge into a comprehensive family of standard and configure-to-order (CTO) solar combiner products. These solar combiners provide quality, ease of installation and safety to the solar industry. For more information contact Bentek Solar at 866-505-0303, or on the Web at [JohnB@bentek.com](mailto:JohnB@bentek.com) or [www.BentekSolar.com](http://www.BentekSolar.com).

# SOLAR COMBINERS