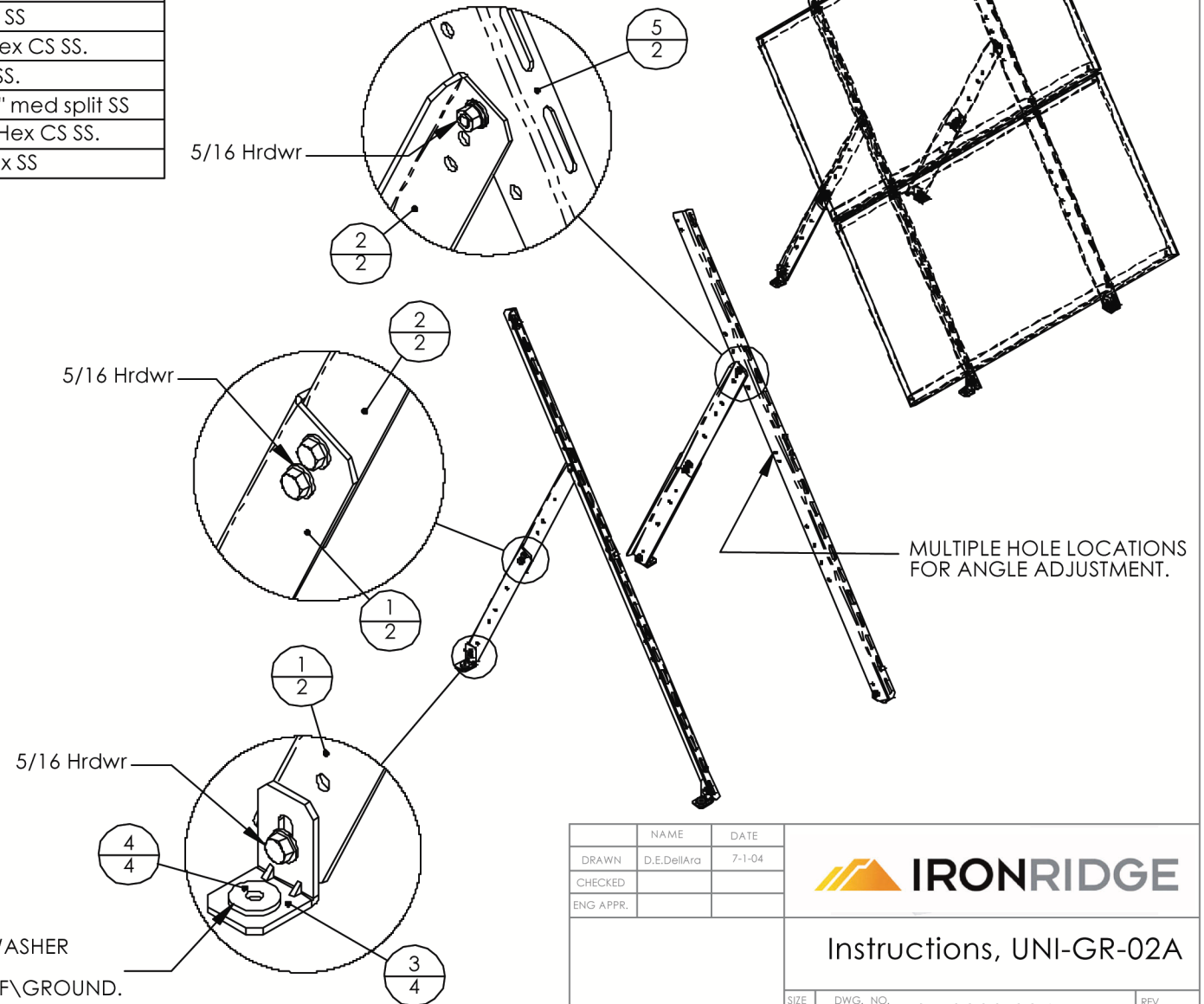


ITEM NO.	QTY.	PART NO.	DESCRIPTION
1	2	51-0519-000	Rail, 19" Outer
2	2	51-0519-001	Rail, 19" Inner.
3	4	51-6000-002	FOOT, GPS ADJUSTABLE
4	4	25-3102-004	Washer, backing cust supplied
5	2	51-0555-001	Rail, 55.0 SOP-GR
7	8	25-2502-000	Washer, flat 1/4" SS.
8	8	25-2501-000	Washer, Lock 1/4" med split SS
9	8	24-2520-440	Nut, 1/4-20 Fin Hex SS
10	8	23-2520-050	Bolt, 1/4-20 x 3/4 Hex CS SS.
11	20	25-3102-000	Washer, flat 5/16" SS.
12	10	25-3101-000	Washer, Lock 5/16" med split SS
13	10	23-3118-021	Bolt, 5/16-18 x 3/4 Hex CS SS.
14	10	24-3118-440	Nut, 5/16-18 Fin Hex SS

REVISIONS			
REV.	DESCRIPTION	DATE	APPROVED
A	Release for production	7-1-04	D.E.Dell'Ara
B	REPLACED NU FEET	3-15-07	VZ



NOTE: MUST INSTALL BACKING WASHER (CUSTOMER SUPPLIED) PRIOR TO ATTACHMENT TO ROOF/GROUND.

	NAME	DATE
DRAWN	D.E.Dell'Ara	7-1-04
CHECKED		
ENG APPR.		



Instructions, UNI-GR-02A

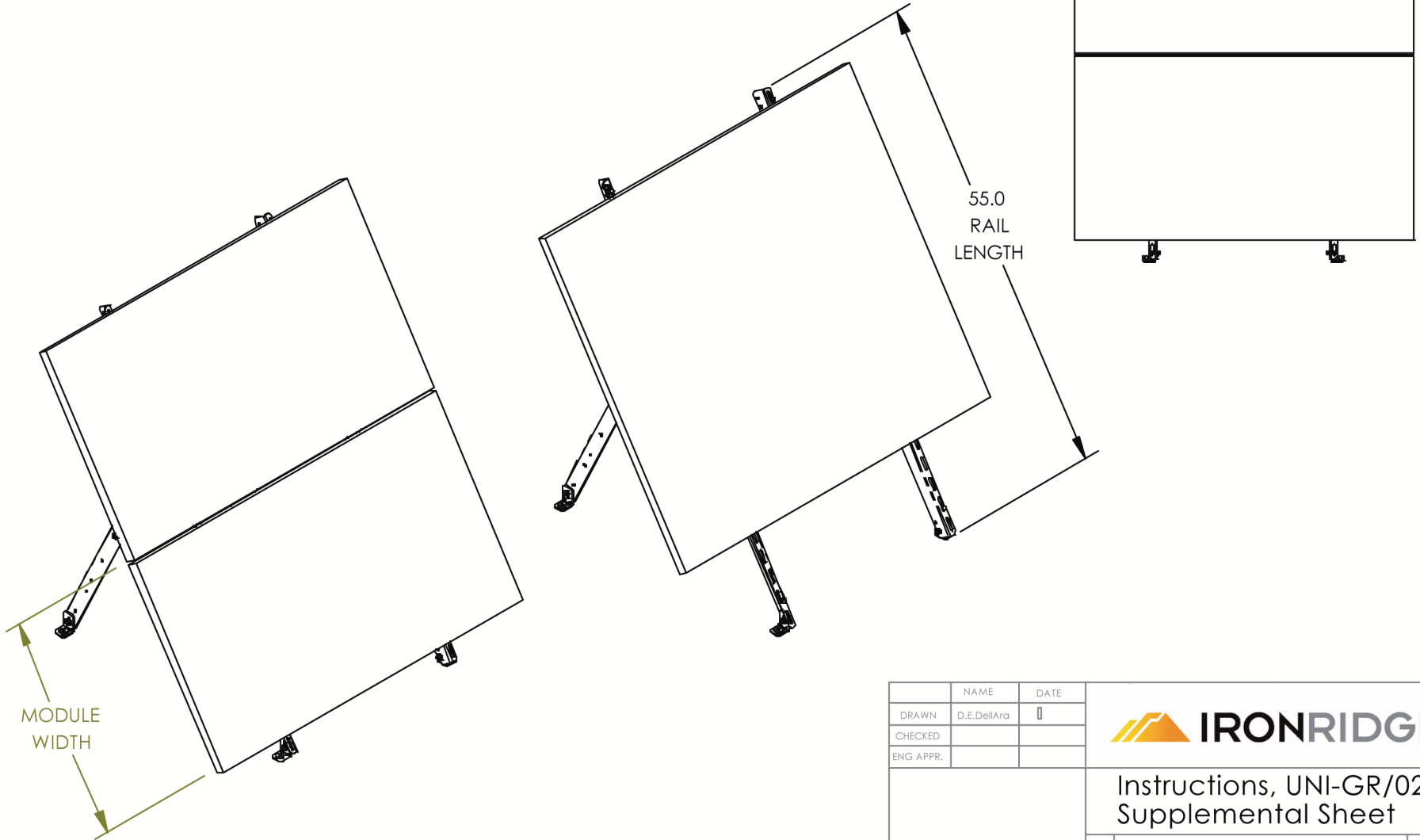
SIZE <b>A</b>	DWG. NO. 91-0300-004	REV. <b>B</b>
------------------	-------------------------	------------------

SCALE:1:1 SHEET 1 OF 2

NOTE: OUR MOUNTS CAN HOLD A VARIETY OF DIFFERENT MODULE CONFIGURATIONS AS INDICATED ON THIS PAGE. TO VERIFY FIT, DIVIDE THE RAIL (MODULE SUPPORT) LENGTH BY THE MODULE WIDTH. ALWAYS ALLOW 1-2 INCHES EXTRA RAIL LENGTH PER MODULE TO ALLOW FOR CLEARANCE BETWEEN MODULES, ETC.

IE: THIS MOUNT HAS A 55" RAIL (MODULE SUPPORT) LENGTH. TO CONFIRM THE FIT FOR A 25.7" WIDE MODULE (KYOCERA 80 FOR EXAMPLE) DIVIDE 55" (THE RAIL LENGTH) BY 25.7" (THE MODULE WIDTH) AND IT IS FOUND THAT (2) OF THE MODULES WILL FIT ON A 55" RAIL WITH 3.6" EXTRA RAIL TO SPARE FOR MODULE CLEARANCE, ETC.

REVISIONS		DATE	APPROVED
REV.	DESCRIPTION		



NAME	DATE
DRAWN D.E.DellAra	1
CHECKED	
ENG APPR.	



Instructions, UNI-GR/02A  
Supplemental Sheet

SIZE <b>A</b>	DWG. NO. 91-0300-003	REV. <b>B</b>
------------------	-------------------------	------------------

SCALE:1:1	SHEET 2 OF 2
-----------	--------------

PROPRIETARY AND CONFIDENTIAL

THE INFORMATION CONTAINED IN THIS DRAWING IS THE SOLE PROPERTY OF IRONRIDGE. ANY REPRODUCTION IN PART OR AS A WHOLE WITHOUT THE WRITTEN PERMISSION OF IRONRIDGE IS PROHIBITED.

DO NOT SCALE DRAWING