

SPM010P

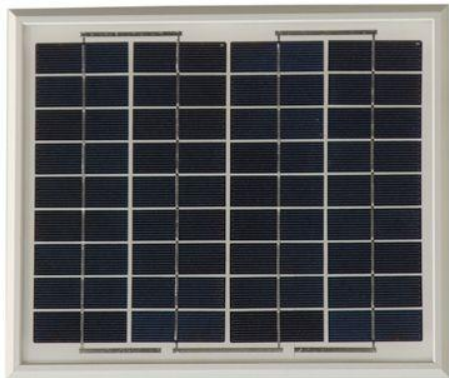
FEATURE:

- IEC61215, TUV certification
- UL 1703 certification
- Using high efficiency 6” Multicrystalline cells.
- Using low iron tempered glass and an EVA pottant with PET back sheet to encapsulated cells.
- Anodized aluminum frame protected structural strength.
- 10 years limited warranty of 90% power output and 25 years limited warranty of 80% power output.



High-efficiency, High-Quality Multicrystalline Photovoltaic Module

SOLARTECH POWER manufactures clean, elegant and durable modules with advanced industry-leading performance for different electrical power requirements. It is designed and built to deliver highest efficiency and reliable power for on-grid residential and commercial systems worldwide.



Solartech 10Watt panels could applied in Electrification of villages in remote areas, Power source for summer vacation homes, Emergency communication systems, Microwave/radio repeater stations ,etc.

UL No.:E309468 TUV No.:0000022551 IEC No.:C1-ASN07001



Solartech Power, Inc.
1070 N. Kraemer Place
Anaheim, CA 92806 USA
Tel: 714-630-8880 Fax: 714-630-8887
www.solartechpower.com
E-mail: sales@solartechpower.com

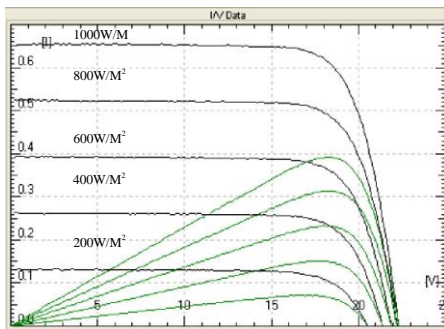
ELECTRICAL CHARACTERISTICS			
	SPM010P	SPM08P	
Power at STC (Pm)	10W	8W	
Maximum power voltage (Vpm)	17.3V	17.1V	
Maximum power current (Ipm)	0.59A	0.46A	
Open circuit voltage (Voc)	21.8V	21.0V	
Short circuit current (Isc)	0.64A	0.61A	
Tolerance	±5%	±5%	
Module efficiency	8.76%	7.1%	
Standard test conditions	Temperature 25°C, Irradiance 1000W/m ² , AM=1.5		
Maximum system voltage	1000V DC	Series fuse rating	10A
Temperature coefficient	Isc: 0.05%/K	Voc: -0.36%/K	Pmax: -0.46%/K

Specifications	
Cell	Multicrystalline silicon solar cell, (78mmx26mm)
No. of cell and connection	36 (4x9)
Dimension	368mm (14.5in) x 310mm (12.2in) x 18mm (0.7in)
Weight	1.4KG

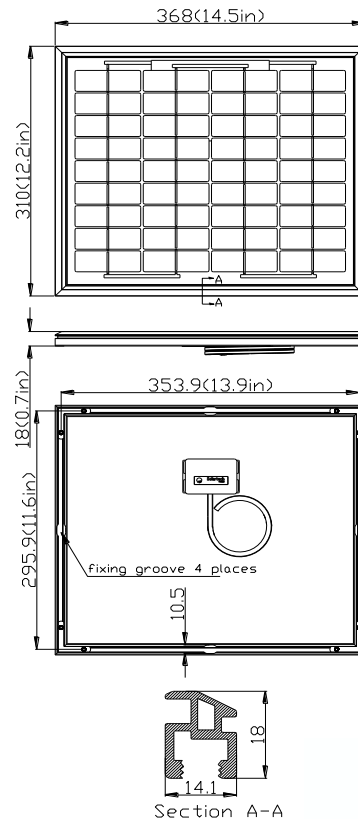
AMBIENT CONDITIONS	
Operating Temperature	-40°C to +85°C
Storage Humidity	<90%

OUT PUT	
Type of output terminal	Junction box (One diode two terminals)
Cable	Length 3000mm

IV CURVES



OUTLINE DIMENSIONS



UL No.: E309468 TUV No.: 0000022551 IEC No.: C1-ASN07001

(800) 967-6917

www.dcpower-systems.com



Solartech Power, Inc.
 1070 N. Kraemer Place
 Anaheim, CA 92806 USA

Tel: 714-630-8880 Fax: 714-630-8887

www.solartechpower.com

E-mail: sales@solartechpower.com